



Moving & Handling Equipment

seating standing toileting bathing changing showering
desks tables sleeping therapy sensory moving handling



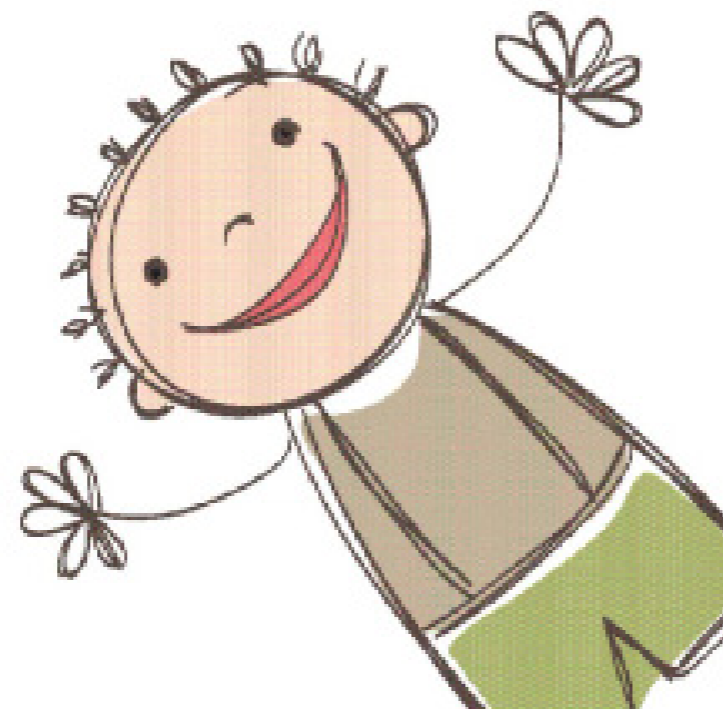
supporting children and
their families for life

welcome

Since 1986, Smirthwaite has developed and retained its reputation as one of the leading designers and manufacturers of innovative special needs equipment. We are dedicated to providing effective solutions that offer significant benefits to babies, children and young adults in their daily lives. There's a passion behind every innovation; our products make a real difference by contributing to happier and more fulfilling lives – we aim to leave parents and children alike with that 'wow' factor! Working closely with children, parents, carers and therapists, we have developed a bespoke and comprehensive range of Seating, Standing, Tables, Desks, Toileting, Bathing, Changing, Showering, Sleeping, Therapy, Sensory, and Moving & Handling products.

contents

intro	3
comfort recline sling	4
universal sling	5
dual access sling	6
smirthwaite130 mobile hoist	8
FSG130	9
CP130	10



moving & handling



We're excited to introduce our new selection of moving and handling equipment at Smirthwaite. As part of the Prism Healthcare family we are able to offer products from one of our sister companies who are a highly trusted moving & handling manufacturer in the UK. Our Customer Service and Technical Product Advisor team can support and advise you in selecting the right product for the needs of your users.

The moving and handling equipment in this range is designed to make moving in care as safe and comfortable as possible for both the child/young adult and the carers. You will find a variety of types available including slings, overhead hoists, and showering facilities.

Our moving and handling equipment is designed to be used in schools, hospitals and a range of other professional healthcare settings as well as home; each product is durable and built to withstand frequent use. To provide you with extra peace of mind, our team of technical experts work with occupational therapist to advise on the most suitable moving and handling equipment; we also provide regular maintenance checks to ensure all equipment conforms to the latest health and safety standards.

Our friendly and knowledgeable service customer support team are here to help – get in touch today on +44(0)1626 835552 to find out more about these products.



comfort recline sling



Material

Available in spacer material, this sling is designed to provide added comfort to the child or young adult as the stretchy material can fit around the individual. This sling is suitable for individuals who wear slings for extended periods.

Features & Benefits

- Designed for in-situ use
- Full body support
- Suitable for transfers to and from a sitting position
- Manufactured from breathable spacer material
- Fixed pommel and padded roll adding comfort and removing stress from between legs and knees
- No handles ensure maximum comfort when in a supine position or when seated
- Suitable for amputees and general transfer as well as hoisting user in supine position
- Spacer material available
- 1 year warranty

A highly versatile in-situ full body recline sling, suitable for those who would wear slings for extended periods

An in-situ full body premium recline sling constructed from breathable 'spacer' material, designed to remain in position under the child for prolonged periods of time providing additional comfort and safety.

An excellent bed transfer sling, this full body sling gives a reclined patient transfer position. Is suitable for use on most hoists that use a conventional hook and loop spreader bar system, such as with the Smirthwaite 130 Mobile Hoist.

The sling features elasticated areas which allow the straps to be folded away when the individual is seated, providing maximum comfort.

Colours



Size	Colour	Code
Junior	Black Spacer	3507
Child	Black Spacer	3508
Junior	Pink Spacer	3509
Child	Pink Spacer	3510
Junior	Aqua Blue Spacer	3511
Child	Aqua Blue Spacer	3512

Technical Specification

all dimensions in mm unless otherwise stated

Size	A	B	C	D
Junior	700	760	305	455
Child	650	690	290	400

All slings are available with or without head support. All dimensions have a tolerance of +/- 20mm.

These slings include colour coded bindings around the edge of the sling to help identify the sling size. Sling sizes are in accordance with the maximum weight capacity as indicated in the table below.

universal sling

One of the most popular full body slings, providing safe, supportive and easy transfers. Its split leg design offers high levels of support and ease of toileting. The range provides options for various fabrics to ensure the sling fits perfectly to each individual, whether they have some mobility impairment or require full body and head support.

An easy to fit and very supportive full body sling which can be used in a divided leg or cross over position. It provides the person with a feeling of comfort and safety as well as an unobstructed view to help them assist in their own transfer. This sling is suitable for those with good head control.



Features & Benefits

- Full body support for those who have good head control
- Versatile, durable and robust
- Suitable for transfers to and from a sitting position
- Side straps even weight distribution making the sling more comfortable
- Quilted leg sections and no binding on outer leg section provide additional comfort
- Spacer material available
- 1 year warranty

Materials

Made from highly durable polyester, this sling is easy to apply and is compatible with all hoists that use hook and loop spreader bar systems e.g. the Smirthwaite 130 Mobile Hoist or the Smirthwaite CP130.

The spacer material has been designed to provide added comfort to the user as the stretchy material can fit around the individual. This sling is suitable for those who wear slings for extended periods.

Colours



Size	Colour	Code
Junior	Black Spacer	3501
Child	Black Spacer	3502
Junior	Pink Spacer	3503
Child	Pink Spacer	3504
Junior	Aqua Blue Spacer	3505
Child	Aqua Blue Spacer	3506

Technical Specification

all dimensions in mm unless otherwise stated

Size	A	B	C	D	E
Junior	750	940	490	450	750
Child	610	770	390	380	610

All slings are available with or without head support. All dimensions have a tolerance of +/- 20mm.

These slings include colour coded bindings around the edge of the sling to help identify the sling size. Sling sizes are in accordance with the maximum weight capacity as indicated in the table below.



dual access sling

An exceptionally versatile sling that is available with side retention straps, and can be used with a patient lifting hoist

This user friendly sling is suitable for toileting purposes when moving individuals who require access to the toilet and/or commode.

Suitable for toileting purposes, this sling provides access to remove and refit lower garments during a transfer. The side retention straps are suitable for those who require extra support or do not have the muscle tone to be able to use a toileting sling.

Designed with comfort in mind, cut away sections reduce pressure under the arms whilst well-padded leg sections provide extra comfort to the user during transfers.

This sling provides unrivaled support as it features a chest strap which can be adjusted before and during the lift. The chest strap features both VELCRO® brand fastener and buckle fastening for additional security.

Material

The sling is available in polyester material, with a slide sheet like surface to make application and retrieval easier, it combines support with comfort, enabling the sling to be used for a range of patients, who cannot use traditional toileting slings.

Binding has been left in place on the leg sections in order to minimise stretch which would be unnecessary during the use of this sling.

Features & Benefits

- V-Shaped boned padded back panel with non-slip surface for extra support
- Unique elastic chest strap, that tightens as the body extends, meaning there is no loss of support
- Supportive and padded make this versatile sling easy to apply and retrieve; its structure enables it to remain flat underneath the users legs, maximising comfort
- Cut-away sections reduce pressure under the arms
- Designed specifically for toileting purposes
- Side retention straps help keep required positioning throughout transfers
- 1 year warranty



Colour



Technical Specification

all dimensions in mm unless otherwise stated

Size	Code	Sling Width	Sling Back
Junior	3513	760	220
Child	3514	680	220



smirthwaite 130 mobile hoist

This great value mobile moving and handling hoist boasts an impressive 130kg lifting capacity, powered leg opening and market leading Linak® actuators and motors.

This user-friendly mobile hoist supports the transfer/lift of mobility impaired patients with minimal strain or risk to the caregiver, while providing complete safety, dignity and comfort to the individual.



With an impressive 130kg lifting capacity, powered leg opening and market-leading Linak® actuators and motors, this robust unit is suitable for everyday use.

It has all the essential functions required to transfer a child or young adult safely in both professional and homecare environments. As the hoist is mobile, a single unit can care for many patients.

Why not pair this hoist with one of our popular slings?

Product Code

3515

Features & Benefits

- Cost effective solution without compromising on quality.
- Powder-coated steel frame, offering durability and stability. Up to 130kg safe working load.
- User-friendly Linak control system making it easy to raise/lower the carry bar and to operate the powered leg opening/closing.
- Hoist safety features offer peace of mind including emergency lowering, manual lowering and an emergency stop button.
- Easy to position with large swivel castors, ergonomic handle and electrically operated leg opening and closing.
- 5 year warranty

FSG130 free standing gantry

A durable lightweight aluminium free standing gantry system designed to provide a safe, stable hoist track in places where a fixed ceiling track is not available or portable solution is required.

When used in conjunction with a portable track hoist, such as the Smirthwaite CP130, the system is perfect for home care, allowing users to extend the time they remain in their own home by years.

It's a cost effective solution that is easy to transport and simple to erect in minutes by either 1 or 2 people without the need for tools.

The FSG130 has a safe working load of 130kg and caters for the requirements of both the patient and caregiver, providing a safe and dignified experience for both.



Features

- High-strength lightweight aluminium 130kg max load
- 1.9-2.85m (6.2-9.35ft) adjustable track length
- 2.1-2.5m (6.9-8.2ft) adjustable height
- Stable 0.87m (2.85ft) feet
- Built-in easy-slide trolley
- Floor level adjusters
- Star Handle securing screws
- Safety latch to prevent uprights retracting
- Securing Bolts and lynch pins

Product Code

3517

Benefits

- Extends the time individuals can stay in their own homes by years
- No structural alterations required to the room
- Complete safety, dignity and comfort for the client and carer
- Compatible with CP130 Portable Track Hoist
- Compatible with other portable hoists with QRS connectors
- Can be used to lift and transfer individuals from a bed, chair or similar fixture
- Easy to assemble, can be assembled by one person without tools
- 5 year warranty



CP130 portable track hoist

A compact and portable track hoist offering exceptional versatility and cost savings when compared to multiple fixed installations.

The hoist can be quickly moved between multiple fixed ceiling track systems and used in conjunction with gantry systems such as the FSG130.

The 'QRS' quick release systems on both the top and bottom of the unit allows it to be swapped between fixed and portable applications in seconds, simply by altering the orientation of the unit and which QRS hook the carry bar is fitted to.

The CP130 is compact and quiet in use, offering a soft start/stop feature for user comfort and provides up to 60 lifts on a single charge. With a maximum rated load of 130kg. The CP130 is suitable for hospitals, care homes and home care environments.



Features

- Compact lightweight aluminium chassis, total unit weight 4.5kg without a carry bar
- Capable of transferring a patient of up to 130kg
- Up, down and emergency lowering controls on both hand controller and unit
- Power switch on rear of unit
- Auto power off after approximately 30 seconds of non-use to save battery
- Up to 100 lifts per charge
- Integrated wall dock and charger
- QRS reacher and QRS carry bar Trolley Set
- LED indicators

Benefits

- Portable
- Cost saving compared to multiple fixed installations
- Can be fitted, and moved between any suitable ceiling track or overhead gantry with a compatible trolley set
- Move patients with minimal effort whilst maintaining their comfort and dignity
- No lifting required. Can be fitted/removed using the QRS reacher
- 1 carry bar - UK 3Hook Standard Black Carry Bar
- 5 year warranty



Product Code

3516



seating standing toileting bathing changing showering desks tables
sleeping therapy sensory moving handling

a helping hand around the World



UK Contact Details

telephone

+44 (0)1626 835552

email

info@smirthwaite.co.uk

website

smirthwaite.co.uk

Smirthwaite Ltd

16 Wentworth Road, Heathfield,

Newton Abbot, Devon TQ12 6TL, UK



Smirthwaite reserves the right to modify product specifications at anytime without prior notification.

All measurements are approximations and can vary depending on the wood and materials used.

All details shown are correct at time of print. Smirthwaite® is a registered trade mark of Smirthwaite Limited.

Catalogue Ref: KM012019

